

**COLDWELL
BANKER**

**MCKINNEY & ASSOC.,
INC., REALTORS®**

2196 LAKE TAHOE BLVD., (HWY 50) SUITE 1
SOUTH LAKE TAHOE, CA 96150

SALES (530) 542-5555
RENTALS (530) 542-0557
FAX (530) 542-2803
www.weselltahoe.com

FOR LEASE
\$4200/month
2280 LAKE TAHOE BLVD.
South Lake Tahoe, Ca.

Free Standing Building
Frontage on Three Streets

SQUARE FOOTAGE: **3,072 sq.ft.**

BUILDING DESCRIPTION: **Front Retail Space,**
Warehouse space with two
Roll Up Doors,
Restroom
Upstairs Loft

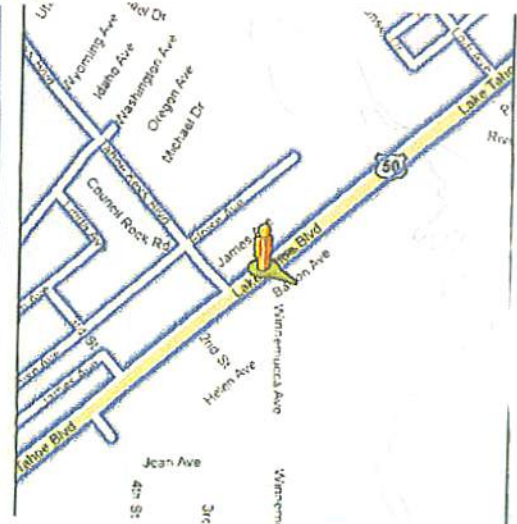
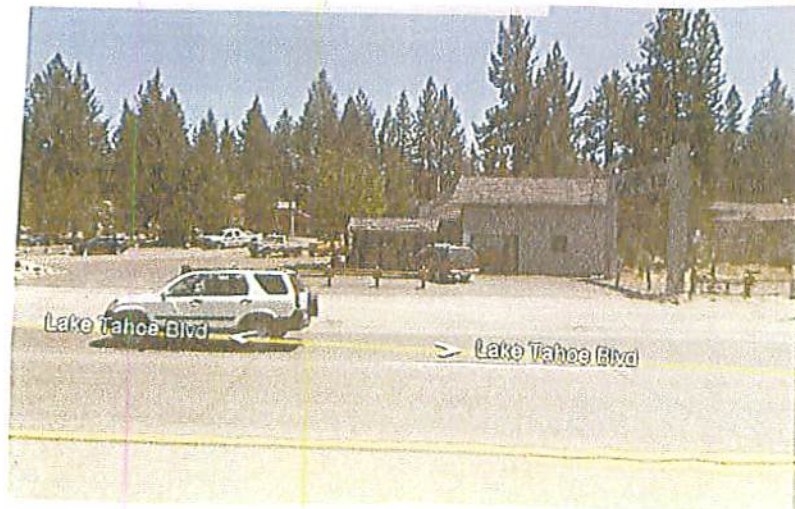
LOT SIZE: **.694 Acre, or 30,230 sq.ft.**

Property located in TRPA Plan Area Statement 110 allowing endless commercial possibilities (including gas station). Also, huge building is located on a huge parcel fronting Highway 50, Winnemucca Street and Barton Ave.

CONTACT PEGGY EICHHORN

530-542-5521

www.tahoecommercialre.com



Each Office Is Independently Owned And Operated.

